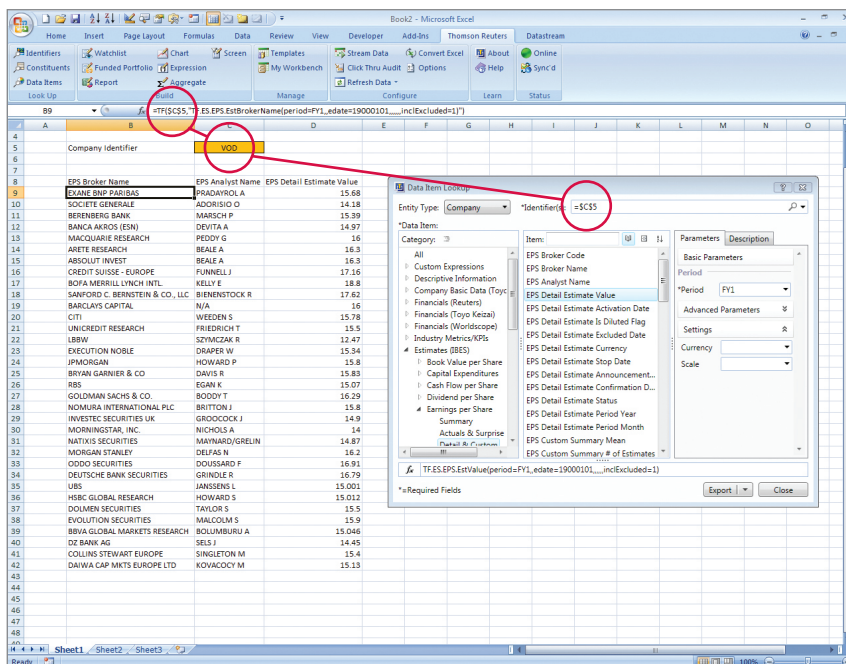


DATASTREAM

LINKING THOMSON REUTERS SPREADSHEET LINK AND ADVANCE FOR OFFICE

Thomson Reuters Spreadsheet Link can now be easily linked to Advance for Office, the existing excel add-in for Datastream. The two add-in functions combine the strength of Datastream financial and economic content with Thomson Reuters Spreadsheet Link.



ADVANCE FOR OFFICE STRENGTHS

- Equity Indices (inc MSCI, FTSE, S&P, Dow Jones)
- Economics (inc Interest Rates and Exchange Rates)
- Fixed Income (Bonds and Bond Indices)
- Derivative (Futures, Options and Commodities)
- Funds (Investment and Unit Trusts)
- Create analytical & presentational charts

THOMSON REUTERS SPREADSHEET LINK

- Reuters fundamentals (As Reported & Standardized)
- Detailed IBES & daily mean estimate data
- Ownership Data
- Intraday equity data
- Complex screening criteria searches
- Portfolio Warehouse
- Equity sheet modeling
- Fundamentals click thru
- Report builders

Embedding TRSL and AFO within a spreadsheet is a simple process involving only the correct referencing of a single cell within the workbook to control the update processes.

Here we have a simple TRSL request for some detailed IBES Estimate data.

You can see the identifier in both the TRSL interface and the Excel formula bar, both referencing cell C5 in the workbook.

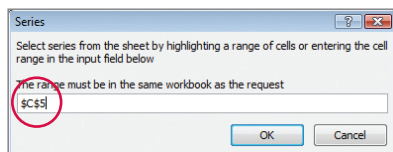
Datastream requests can simply be added to the sheet using either of AFO's request mechanisms, ActiveX embedded requests or the powerful Request Table functionality.



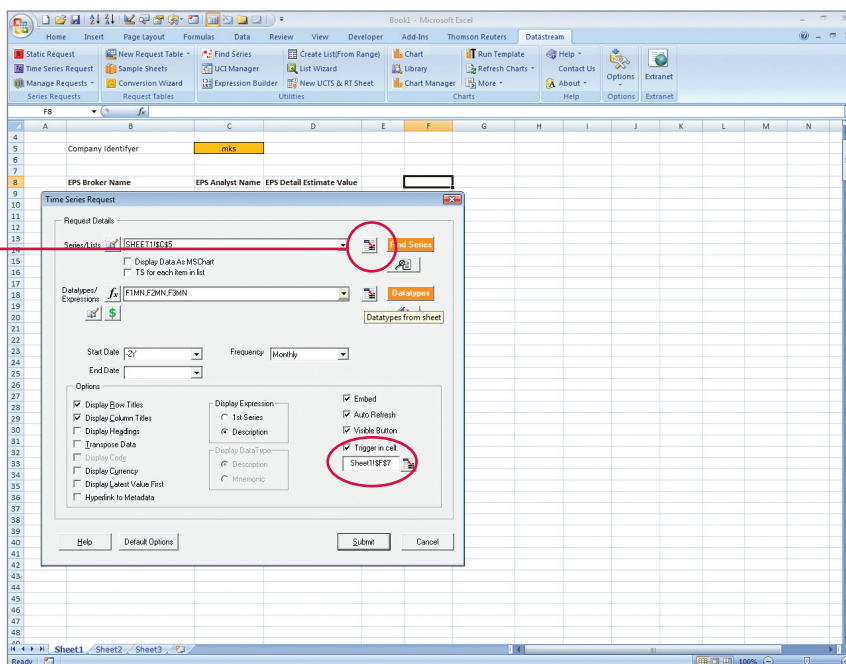
THOMSON REUTERS™

USING AFO EMBEDDED REQUESTS

A simple Timeseries request can be embedded and by using the cell referencing option the same cell used in the TRSL request can be linked in AFO.



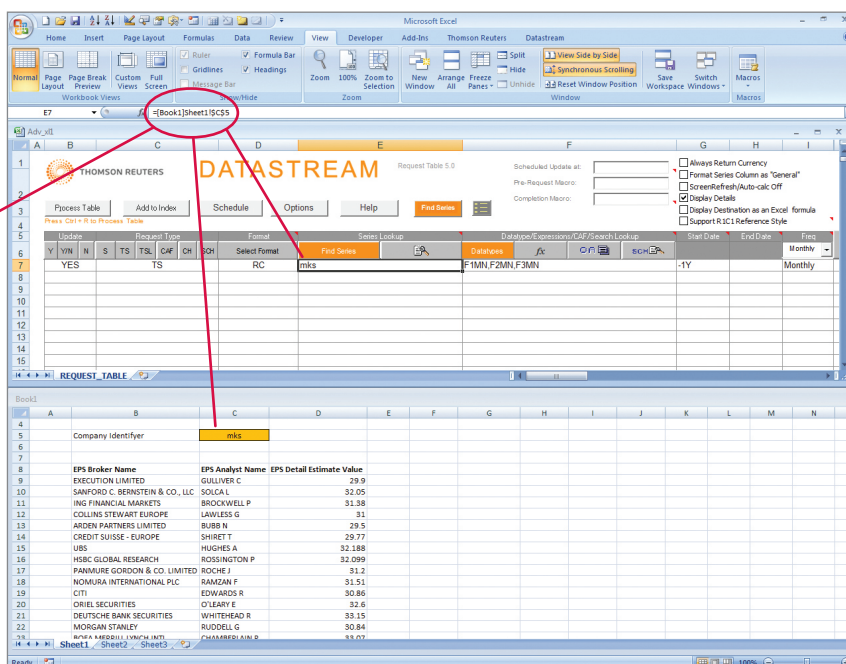
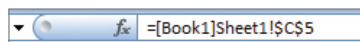
To enable this request to refresh automatically when the reference cell is changed users need to enable the Trigger in Cell option. The location of the trigger cell can be anywhere on the sheet and therefore does not need to be located close to the request string.



USING AFO REQUEST TABLES

As currently with Request Tables, nearly all Excel functionality can be utilised to control the inputs.

By changing the cell format of the Series Lookup column to 'General' from the standard 'Text' we can use simple cell referencing to link the input to the code cell on the output sheet.



Send us a sales enquiry at:

financial.thomsonreuters.com/sales

Read more about our products at:

financial.thomsonreuters.com

Find out how to contact your local office:

financial.thomsonreuters.com/locations

Access customer service at:

financial.thomsonreuters.com/customers

POINTS TO CONSIDER:

- When using a Request Table to update Datastream content a second update step will be needed once a change in ticker has taken place: TRSL will automatically refresh but the Request Table will need it's update macro to started either manually by clicking the 'Process Table' button or by some personal VB code
- When using embedded links and the 'trigger in cell option' AFO will update immediately upon a change in ticker alongside the TRSL request(s)

